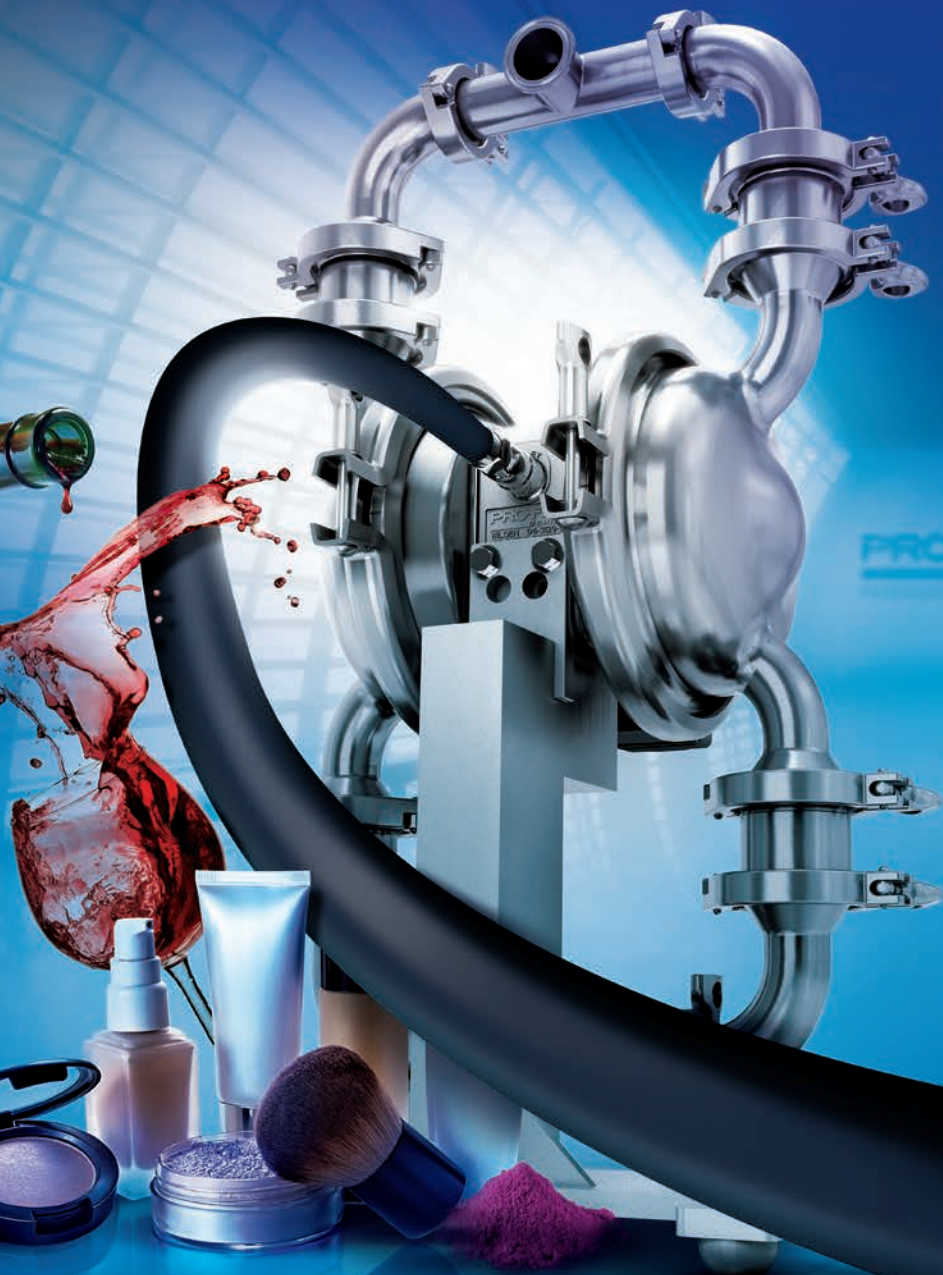


# SHIFTING HYGIENIC TO A WHOLE NEW LEVEL.

Introducing the world's most energy-efficient sanitary pump in its class. Period.



The all new...

**PRO-FLO®**  
SHIFT



PROGRESSIVE PUMP TECHNOLOGY

- Powered by the stainless steel version of the energy-efficient Pro-Flo SHIFT Air Distribution System (ADS)
- Pro-Flo® SHIFT ADS automatically optimizes air consumption and eliminates costly overfilling of the air chamber
- Up to **60% savings** in air consumption over competitive AODD pump technologies means greater yield per SCFM used
- Easy to maintain with the fewest ADS parts of any AODD pump competitor
- Mechanically actuated meaning it's submersible, has no electronic parts, requires no additional configuration or complicated curves
- 3-A, EHEDG, 1935/2004/EC, CE, and ATEX available on some models

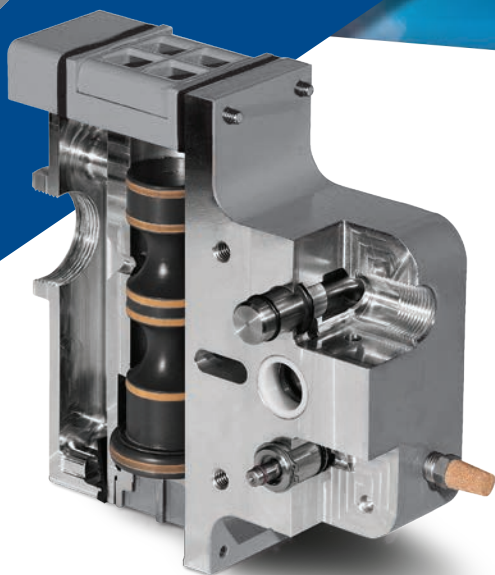
See the proof at  
[profloshift.com/proof](http://profloshift.com/proof)

**Simple. Reliable. Efficient. And now, Hygienic.**

Wilden's Pro-Flo SHIFT Air Distribution System (ADS) offers sustainable value by providing the most efficient pump in its class. The patent-pending Pro-Flo SHIFT Air Control Spool automatically adjusts to varying system parameters to reduce energy consumption by eliminating over-filling of the air chamber. Best of all, Pro-Flo SHIFT is easy to use... just **"Plug, Pump, and Save."**

# WILDEN®





For hygienic applications, Wilden's revolutionary new stainless steel Pro-Flo SHIFT offers unmatched efficiency and the fastest return on investment. Pro-Flo SHIFT optimizes AODD pump efficiency while maximizing product yield by addressing a number of crucial areas of performance including:

Pro-Flo SHIFT Model	Inlet/ Discharge	Max Discharge Pressure	Max Solids Size	Max Suction Lift	Max Flow
PS4 Saniflo™ Hygienic	38 mm (1-1/2")	8.6 bar (125 psig)	Mushroom Valve: 6.4 mm (1/4") Ball Valve: 12.7 mm (1/2")	5.4 m (17.6') Dry 9.0 m (29.5') Wet	357 lpm (94 gpm)
PS8 Saniflo™ Hygienic	51 mm (2")	8.6 bar (125 psig)	Mushroom Valve: 6.4 mm (1/4") Ball Valve: 12.7 mm (1/2")	4.1 m (13.6') Dry 9.0 m (29.5') Wet	575 lpm (152 gpm)
PS15 Saniflo™ Hygienic	76 mm (3")	8.6 bar (125 psig)	Mushroom Valve: 9.5 mm (3/8") Ball Valve: 19.1 mm (3/4") Flap Valve: 60.3 mm (2-3/8")	4.4 m (14.5') Dry 9.0 m (29.5') Wet	844 lpm (223 gpm)



EFFICIENCY

**UP TO 60%  
REDUCTION  
IN AIR CONSUMPTION**

PERFORMANCE

**UP TO 69%  
INCREASE  
IN PRODUCTIVITY  
VS. THE COMPETITION  
USING THE SAME COMPRESSOR**



R.O.I



**UP TO \$4,800  
ANNUAL SAVINGS PER PUMP**



See the proof at  
[profloshift.com/proof](http://profloshift.com/proof)



Authorized PSG® Partner:

**WILDEN®**

PSG Grand Terrace  
22069 Van Buren Street, Grand Terrace, CA 92313-5651  
Telephone 909-422-1730 • Fax 909-783-3440  
[wildenpump.com](http://wildenpump.com)

**airpumping.co.uk**

est. 1979

Unit 16, Upminster Trading Park, Warley St., Upminster, Essex, RM14 3PJ, ENGLAND