

# SHIFTING EFFICIENT TO A WHOLE NEW LEVEL.

Introducing the world's most energy efficient pump in its class. Period.

The all new...  
**PRO-FLO®**  
//SHIFT  
PROGRESSIVE PUMP TECHNOLOGY

- Achieves up to **60% savings** in air consumption over competitive AODD pump technologies
- Easily reduce your carbon footprint (higher productivity with reduced energy)
- Lowers operational cost and total cost of ownership, providing fastest ROI
- Easy to maintain (fewest ADS parts of any AODD pump competitor)
- Mechanically actuated, no electronic parts, submersible, no additional configuration or complicated curves

## Simple. Reliable. Efficient.

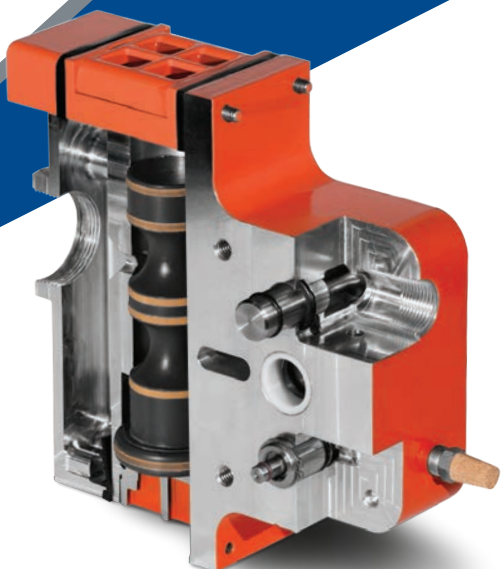
The Wilden Pro-Flo® SHIFT Air Distribution System (ADS) offers sustainable value by providing the most efficient pump in its class. The Pro-Flo SHIFT Air Control Spool automatically adjusts to varying system parameters to reduce energy consumption by eliminating over-filling of the air chamber. Best of all, Pro-Flo SHIFT is easy to use... just *"Plug, Pump and Save."*

See the proof at  
**[profloshift.com/proof](http://profloshift.com/proof)**

# WILDEN®

22069 Van Buren Street • Grand Terrace, CA 92313-5607 USA • T: +1 (909) 422-1730 •  
F: +1 (909) 783-3440 • [wildenpump.com](http://wildenpump.com)

**airpumping.co.uk**  
est. 1979  
Unit 16, Upminster Trading Park, Warley St., Upminster, Essex, RM14 3PL, ENGLAND



As a revolutionary, easy-to-use and high-efficiency air-operated double-diaphragm pump, the Pro-Flo SHIFT offers unmatched performance and the fastest return on investment available. Pro-Flo SHIFT optimizes air consumption while maximizing product yield by addressing a number of crucial areas of pump performance, including:



EFFICIENCY

**UP TO 60%  
REDUCTION  
IN AIR CONSUMPTION**

PERFORMANCE

**UP TO 69%  
INCREASE  
IN PRODUCTIVITY  
VS. THE COMPETITION  
USING THE SAME COMPRESSOR**



ROI



**UP TO \$4,800  
ANNUAL SAVINGS PER PUMP**

Pro-Flo SHIFT Model	Inlet/Discharge	Max Discharge Pressure	Max Solids Size	Max Suction Lift	Max Flow
PS1 Original Series	13 mm (1/2")	8.6 bar (125 psig)	1.6 mm (1/16")	5.9 m (19.3') Dry, 9.8 m (32.3') Wet	60.2 lpm (15.9 gpm)
PS4 Original Series	38 mm (1-1/2") / 32 mm (1-1/4")	8.6 bar (125 psig)	4.8 mm (3/16")	7.1 m (23.3') Dry, 8.6 m (28.4') Wet	375 lpm (99 gpm)
PS8 Original Series	51 mm (2")	8.6 bar (125 psig)	6.4 mm (1/4")	7.2 m (23.8') Dry, 9.0 m (29.5') Wet	723 lpm (191 gpm)
PS15 Original Series	76 mm (3")	8.6 bar (125 psig)	9.5 mm (3/8")	6.6 m (21.6') Dry, 8.6 m (28.4') Wet	927 lpm (245 gpm)
PS220/230 FIT	25 mm (1")	8.6 bar (125 psig)	6.4 mm (1/4")	6.9 m (22.7') Dry, 9.0 m (29.5') Wet	254 lpm (56 gpm)
PS420/430 FIT	38 mm (1-1/2")	8.6 bar (125 psig)	6.4 mm (1/4")	6.2 m (20.4') Dry, 9.6 m (30.6') Wet	510 lpm (135 gpm)
PS820/830 FIT	51 mm (2")	8.6 bar (125 psig)	6.4 mm (1/4")	7.1 m (23.3') Dry, 9.0 m (29.5') Wet	685 lpm (181 gpm)
PS1520/1530 FIT	76 mm (3")	8.6 bar (125 psig)	12.7 mm (1/2")	7.2 m (23.8') Dry, 9.7 m (31.8') Wet	1026 lpm (271 gpm)



See the proof at  
[profloshift.com/proof](http://profloshift.com/proof)



Order Online

**WILDEN®**

PSG

22069 Van Buren Street, Grand Terrace, CA 92313-5651

P: +1 (909) 422-1730 • F: +1 (909) 783-3440

[wildenpump.com](http://wildenpump.com)

Authorized PSG® Partner:

**airpumping.co.uk**

est. 1979

Unit 16, Upminster Trading Park, Warley St., Upminster, Essex, RM14 3PJ, ENGLAND